

# THE WORLD IN A MATCHBOX



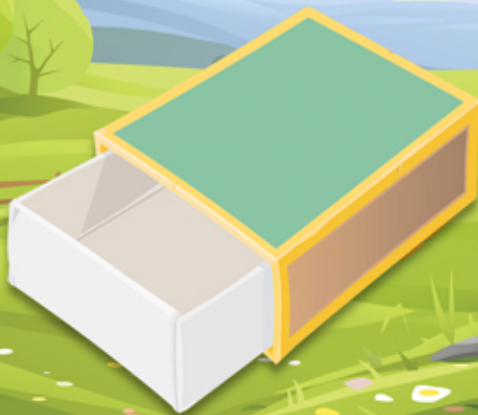
GET ADVENTUROUS



1 HOUR



PREPARATION NEEDED



## GETTING INTO THE ACTIVITY

How much of the world can you fit inside a matchbox? Let's find out by taking on an activity that helps us to focus on the small things in life.

Take a matchbox (or similar) and head out for a walk in your local area (with an adult). Try to find as many things as possible to fit inside your matchbox. Obviously the smaller the better, to allow for lots of items to fit. Every item must be different. Theme your hunt around one the tasks below to help add to the challenge.

**Most items:** Challenge a family member to see who can fit the most items inside the matchbox.

**A-Z:** Try to find items which all start with different letters of the alphabet. Can you fit all 26 inside your matchbox?

**Days of Creation:** Can you find 6 or more items which represent the different days of creation?

**Colours:** How many different coloured items can you find?

Afterwards, unpack your matchbox and take a photo of all the items you managed to find. Send the photo to your BB group or share on social media using #BBatHOME.



## WHAT YOU'LL NEED

- Matchbox (or similar)



## NOTES FOR PARENTS & CARERS

All activity should be supervised by an adult. If going beyond the garden to collect items then please follow current local guidelines. Share a picture of your matchbox with your BB group or post on social media using #BBatHOME. An adult should initiate any contact with the BB group and/or share on social media.